

Ca. 1.75

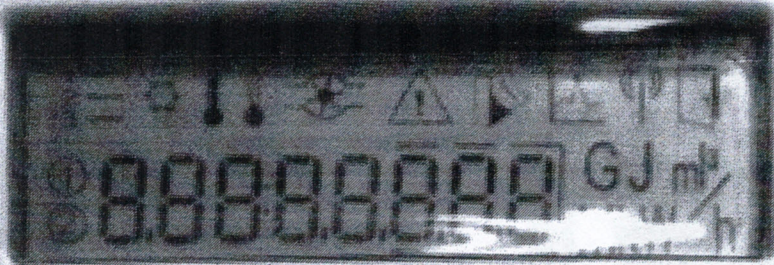
STAST

0.



Totalforbrug fra opstartning.

1



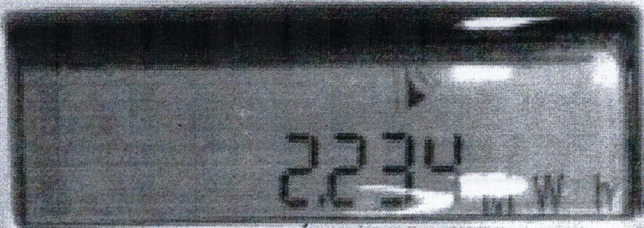
Ingen betydning

2



Ingen betydning

3.



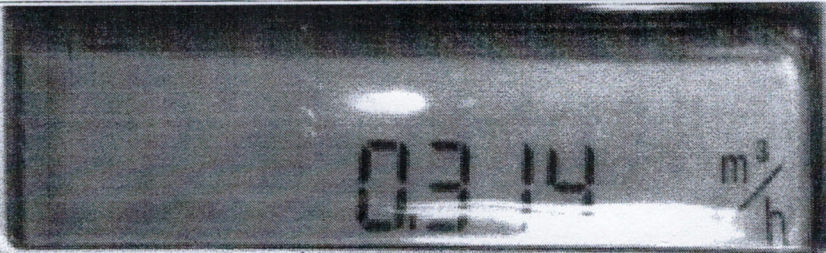
Mega Watt forbrug

4.



Total m³ vand forbrug

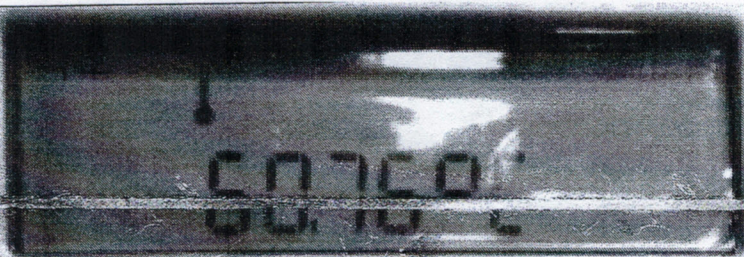
5.



x Aktuel Vand gennemløb

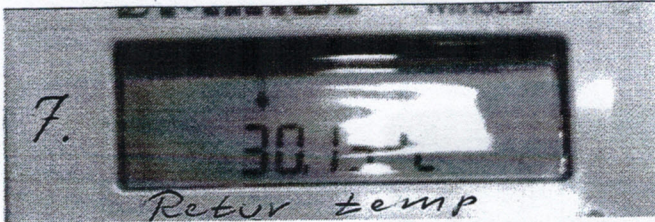
Vand.

6.



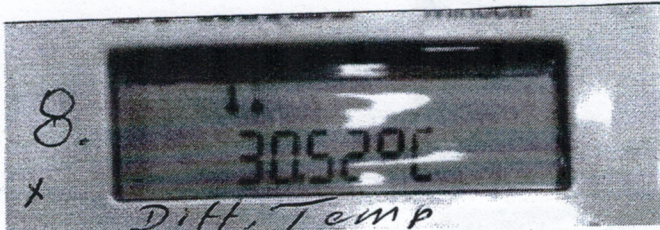
From labs temp

7.



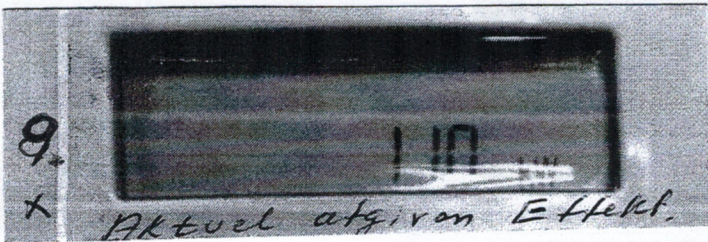
Return temp

8.



Diff. Temp

9.



Actual at given Effekt.

$$\frac{\text{Diff. Temp} \times m^3 \text{ Vand}}{860} = \text{KW}$$

$$\times \frac{30.52 \times 314}{860} = 11.14 \text{ KW}$$